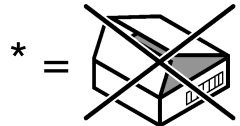
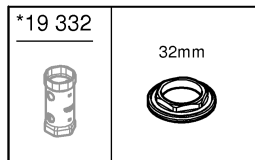
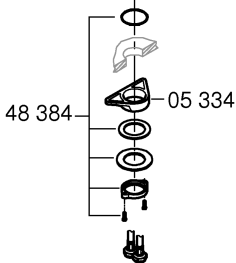
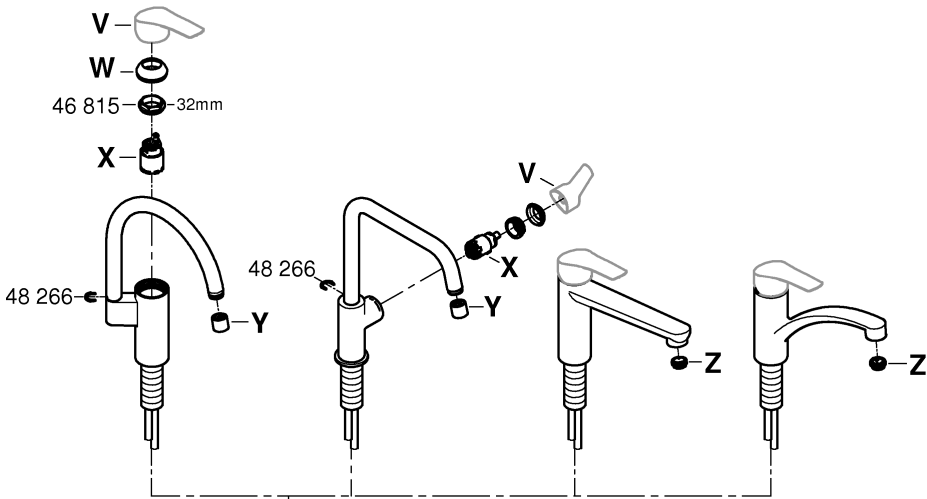




<b>V</b>	48 530	48 540	---	48 531
<b>W</b>	46 492	46 492	---	46 492
<b>X</b>	46 374	46 863	46 824 (F)	46 963
		46 824 (F)		

	25 l/min	15 l/min	13 l/min	11 l/min	9 l/min	(KSA)	(UAE)	(CN)
<b>Y</b>	48 557	48 418	---	---	101 044	48 419	48 419	---
<b>Z</b>	---	---	48 356	48 264	---	48 377	---	---





DIN EN 806

DIN EN 1717  
DIN 1988



bar

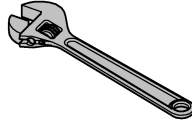
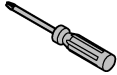
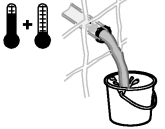


°C

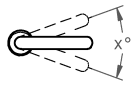
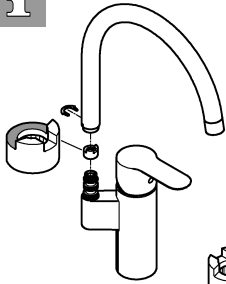
max. 10  
0,5



max. 70°  
max. 60°



32mm  
\*19 332

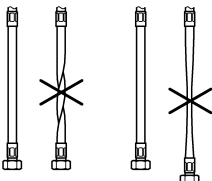
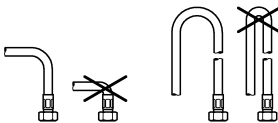
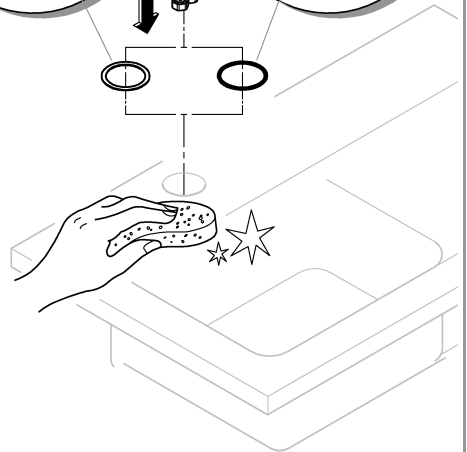
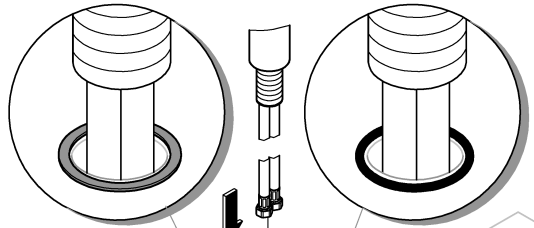


150°



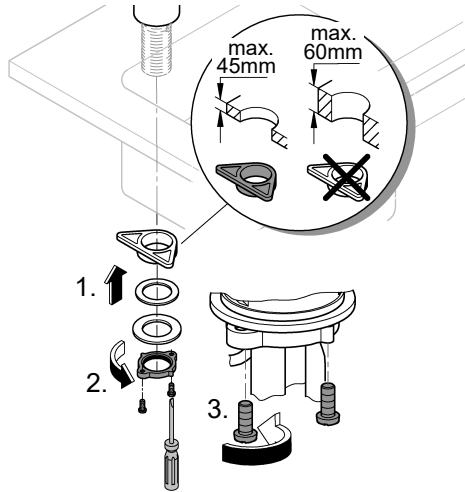
0°

1





2



3

